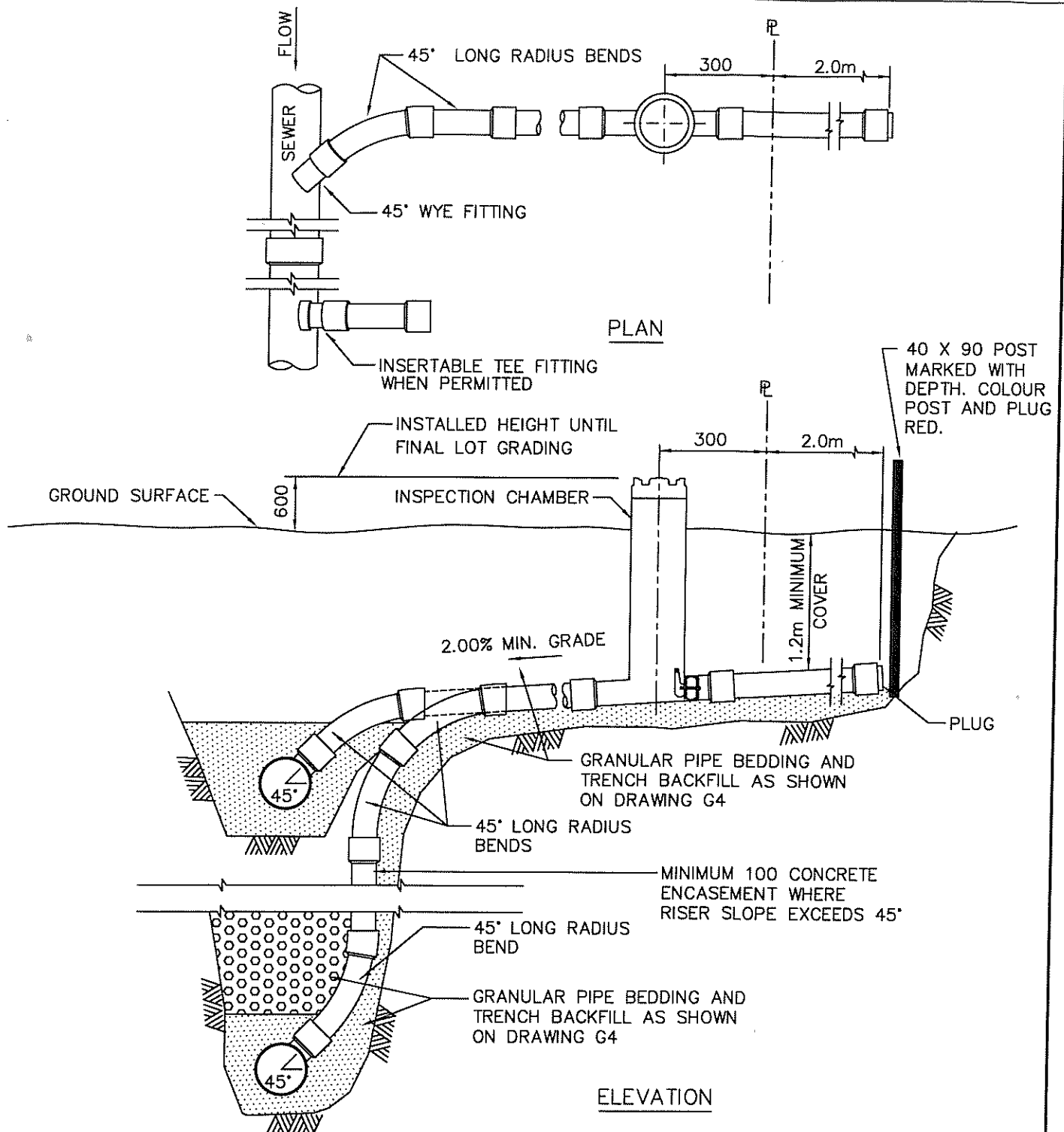


- NOTE: 1. TRENCHING TO COMPLY WITH ALL REQUIREMENTS OF WORKSAFE BC.
 2. REFER TO CONTRACT DRAWINGS, SECTION 31 23 01 FOR DETAILED SPECIFICATIONS.

NOT TO SCALE



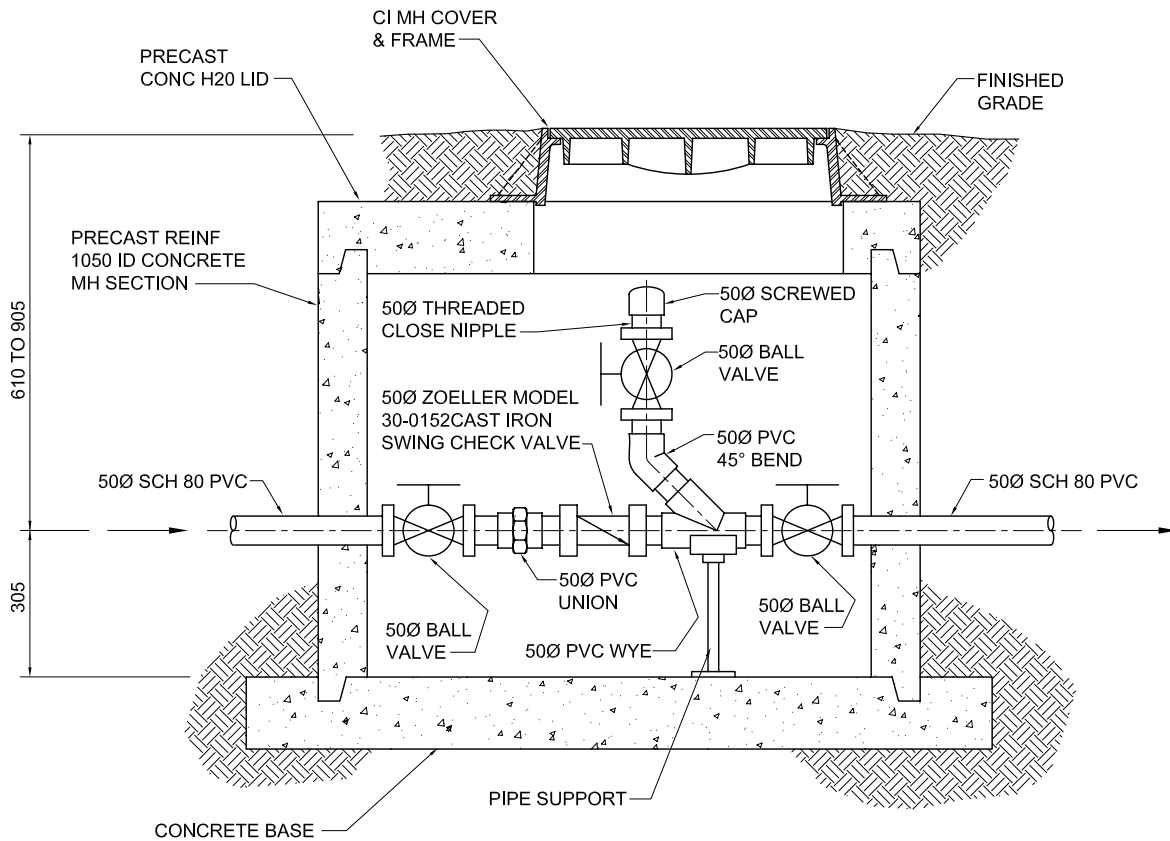
- NOTE: 1. CONNECTIONS TO BE 100 OR AS SPECIFIED ON CONTRACT DRAWINGS.
 2. RISER TYPE SERVICE TO BE USED ONLY WHEN SERVICE IS MORE THAN 2.4m ABOVE WYE INVERT OR AS DIRECTED BY CONTRACT ADMINISTRATOR.
 3. LOCATION OF SERVICE AND MARKER AS SHOWN ON CONTRACT DRAWINGS.
 4. SEE DRAWING S9 FOR DETAILS OF INSPECTION CHAMBER AND INSTALLATION REQUIREMENTS.

NOT TO SCALE

SANITARY SEWER SERVICE CONNECTION

DRAWING NUMBER:

S7



VALVE CHAMBER FOR SANITARY FORCE MAIN CONNECTION

DATE

REVISIONS

APPROVED



TOWN OF VIEW ROYAL

DRAWN BY: RCL

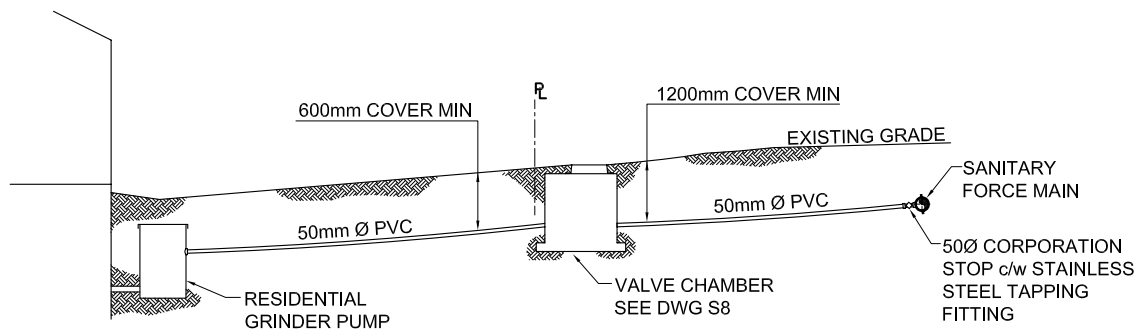
DATE: AUG 2006

APPROVED BY:

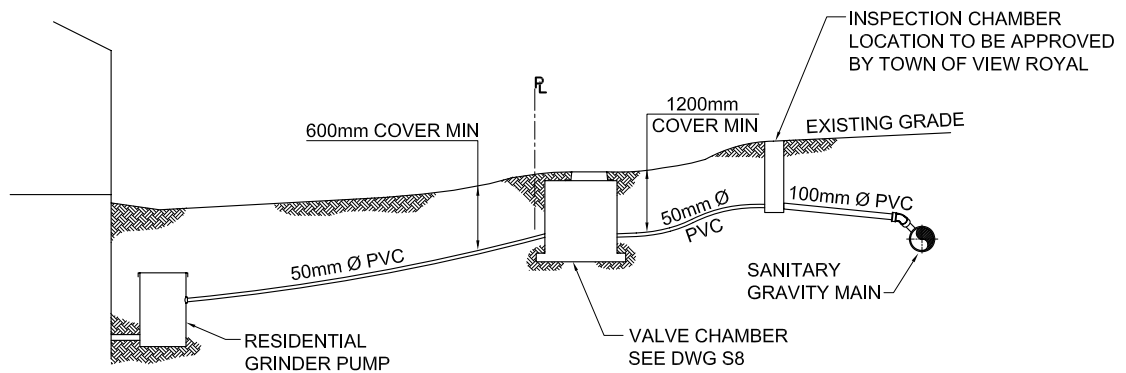
DWG NO.

SCALE: NTS

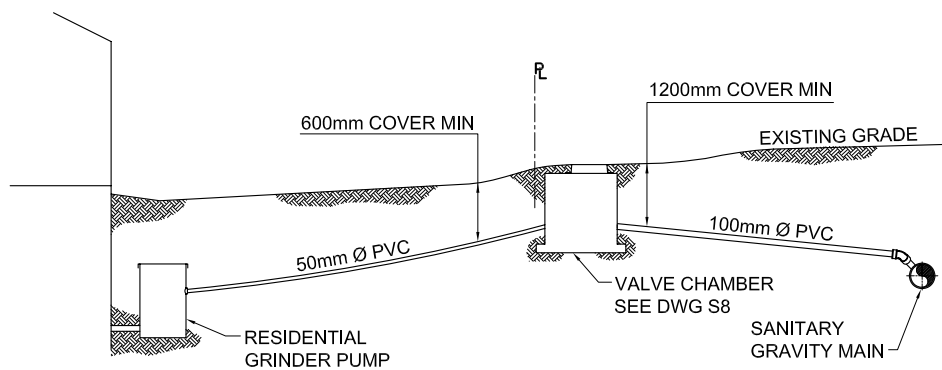
S8



PUMPED TO FORCE MAIN



PUMPED/GRAVITY TO GRAVITY MAIN WITH INSPECTION CHAMBER



PUMPED/GRAVITY TO GRAVITY MAIN

RESIDENTIAL GRINDER PUMP CONNECTION TO SANITARY FORCE/GRAVITY MAIN

DATE

REVISIONS

APPROVED



TOWN OF VIEW ROYAL

DRAWN BY: RCL

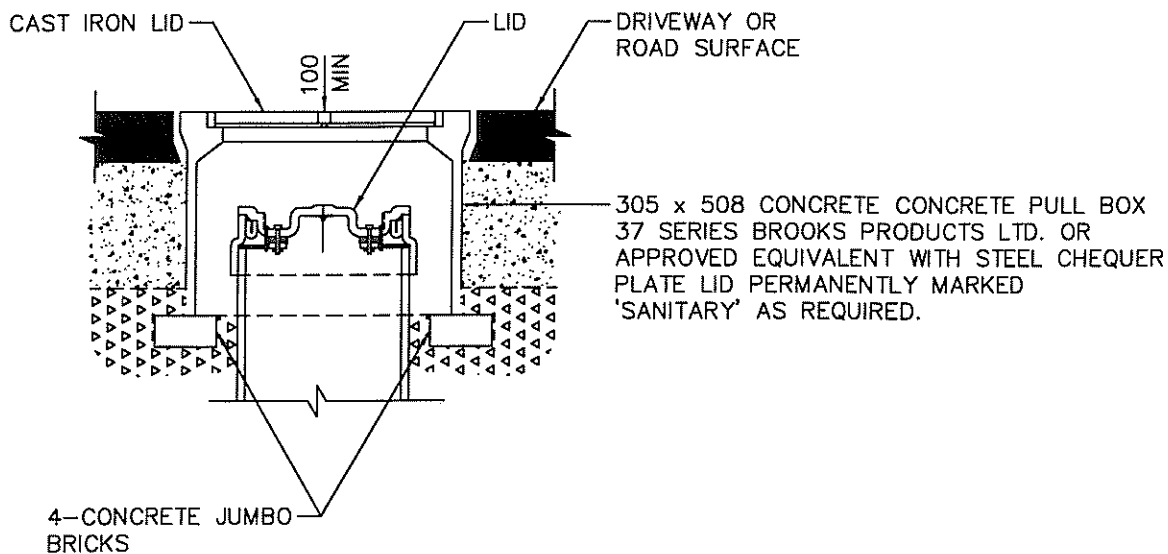
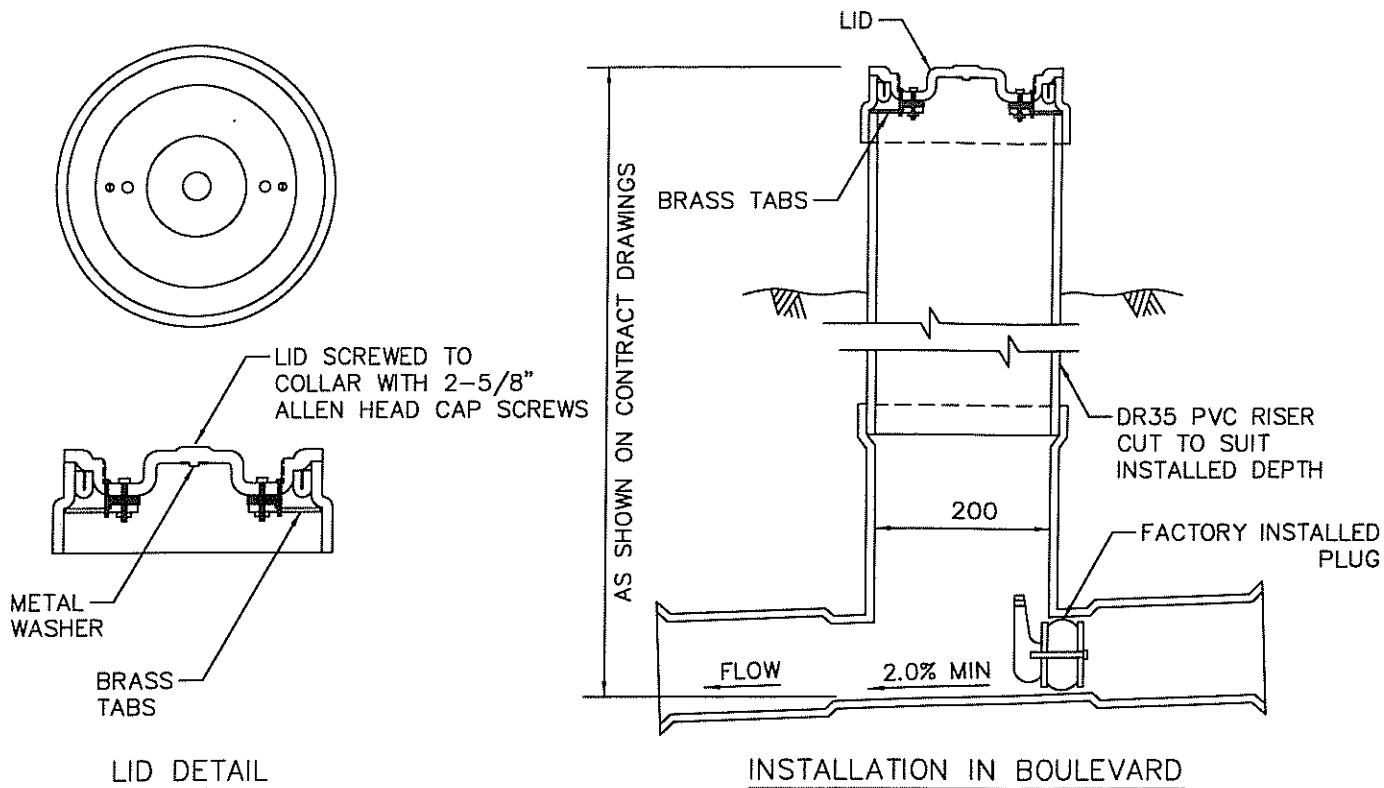
DATE: AUG 2006

APPROVED BY:

DWG NO.

SCALE: NTS

S9



- NOTE: 1. REFER TO DRAWING S7 FOR INSTALLATION REQUIREMENTS.
2. INSPECTION CHAMBER TO BE APPROVED MANUFACTURED FITTING.
3. REFER TO CONTRACT DRAWINGS FOR SITE SPECIFIC DIMENSIONS. REFER TO SECTION 33 30 01 FOR DETAILED SPECIFICATIONS.

NOT TO SCALE

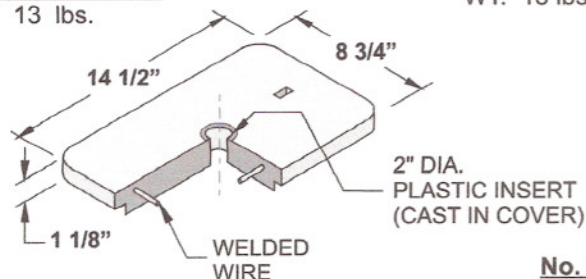
INSPECTION CHAMBER FOR 100 TO 200
SANITARY SEWER CONNECTION

DRAWING NUMBER:

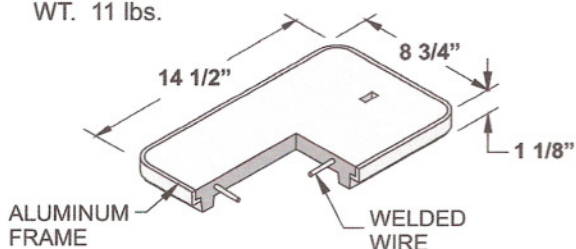
S9

No. 3 - SP COVER

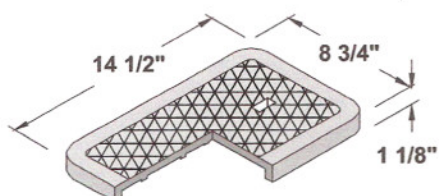
WT. 13 lbs.

**No. 3 - MA COVER**

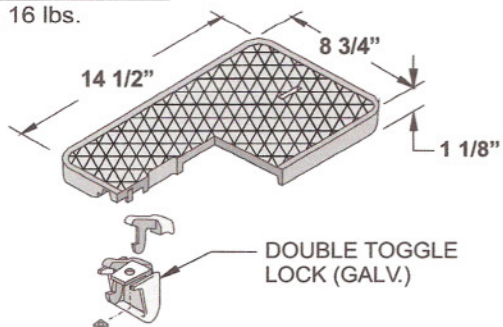
WT. 11 lbs.

**No. 3 - T CAST IRON COVER**

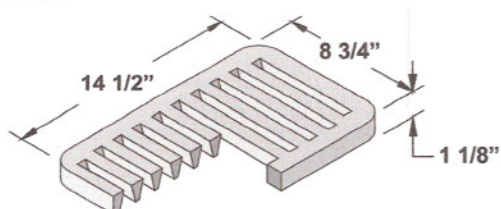
WT. 16 lbs.

**No. 3 - TL CAST IRON LOCKING COVER**

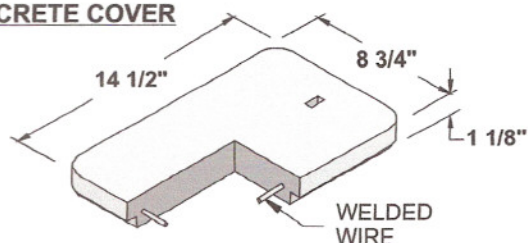
WT. 16 lbs.

**No. 3 - TG CAST IRON GRATE**

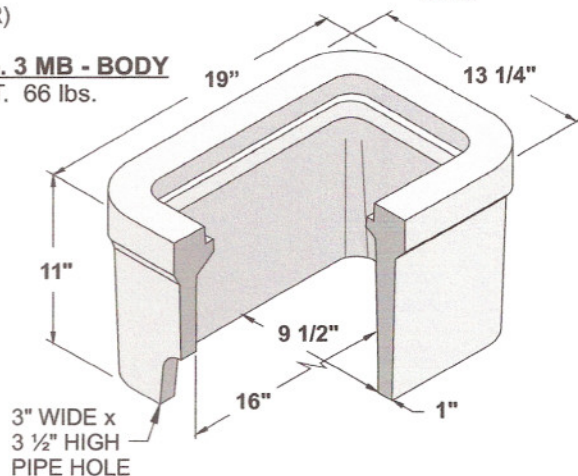
WT. 19 lbs.

**No. 3 MB - CONCRETE COVER**

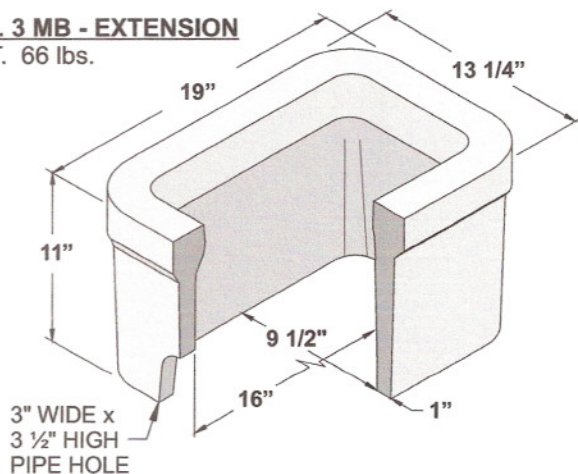
WT. 13 lbs.

**No. 3 MB - BODY**

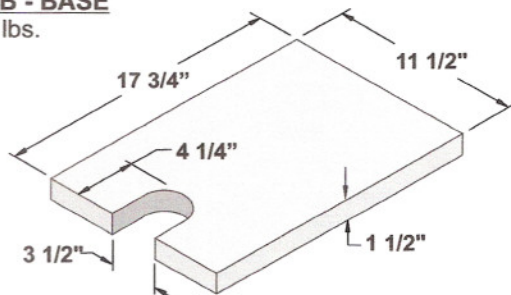
WT. 66 lbs.

**No. 3 MB - EXTENSION**

WT. 66 lbs.

**No. 3 MB - BASE**

WT. 20 lbs.



9 1/2" x 16" METER BOX
(for 3/4" WATER METER)

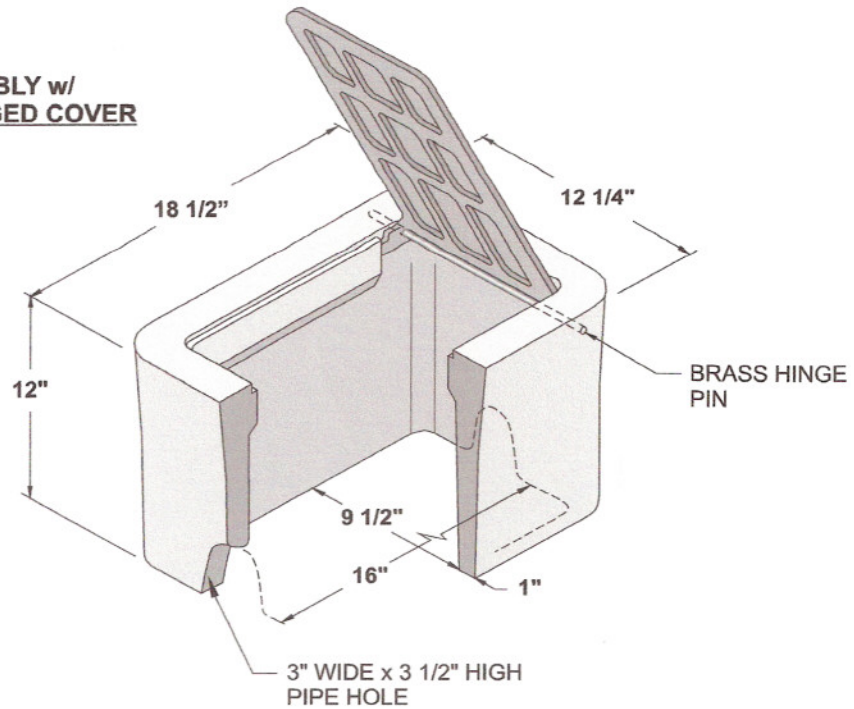
ORG. DWG. DATE
03-03-95

REV. DWG. DATE
12-06-00

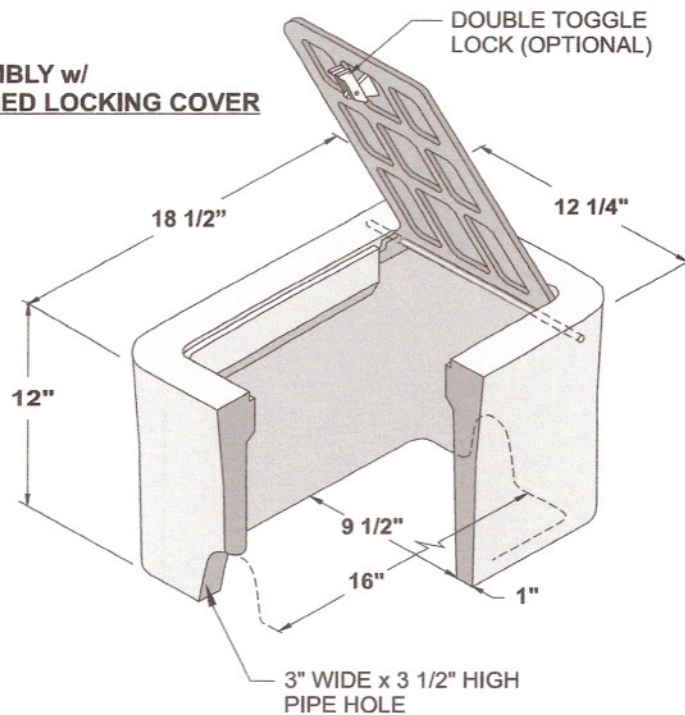
BROOKS
PRODUCTS

3MB

**No. 3 - H ASSEMBLY w/
CAST IRON HINGED COVER**
WT. 68 lbs.



**No. 3 - HL ASSEMBLY w/
CAST IRON HINGED LOCKING COVER**
WT. 68 lbs.



9 1/2" x 16" METER BOX
(for 3/4" WATER METER)

ORG. DWG. DATE
03-03-95

REV. DWG. DATE
12-06-00

BROOKE
PRODUCTS

3-H MB